

DAILY – VIRTU CLEANING INSTRUCTIONS

1. Open the door and place the green service key in the door. (photo A) or simply close the door to activate the Rinse.
2. Fill both coffee and powder hoppers if needed. It is cleaner if you remove the hoppers and fill them on the counter.
3. Take a dry paint brush and sweep all excessive coffee grounds and powders into the grounds waste bucket and mixing bowls. (photo B and C)
4. Place a container under the dispensing nozzle and press (**RINSE**) on the touch screen.
5. Empty the grounds and waste water buckets, clean them and place them back into position with the sensors inside of the buckets. (photo D) - A plastic bag or paper towel in the bottom of the grounds bucket will help keep it clean as well.
6. Close the door and exit the service menu. "A clean machine is a healthy machine"



Photo A



Photo B



Photo C



Photo D



Photo E

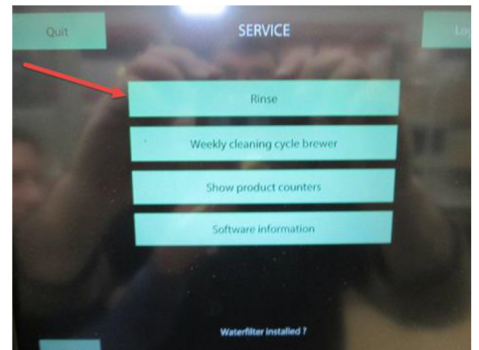


Photo F

WEEKLY – VIRTU CLEANING INSTRUCTIONS

Same as daily cleaning plus the following:

1. Weekly Cleaning Cycle Brewer - place one white tablet inside of brewer chamber (Photo G) and press (**PRESS HERE TO RUN CLEANING CYCLE**) (photo H).
2. After cleaning cycle is done (8 minutes), close door and exit service menu.
3. Make sure that Mixing Bowls and Powder Nozzles are clean. (photo B)

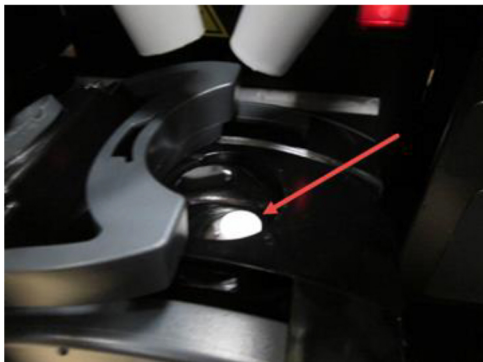


Photo G

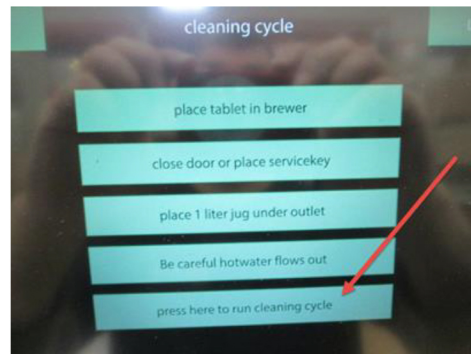


Photo H

Please contact us with service issues or product needs:



GOLD CUP
SERVICES

801-486-3714 | goldcupservices.com